

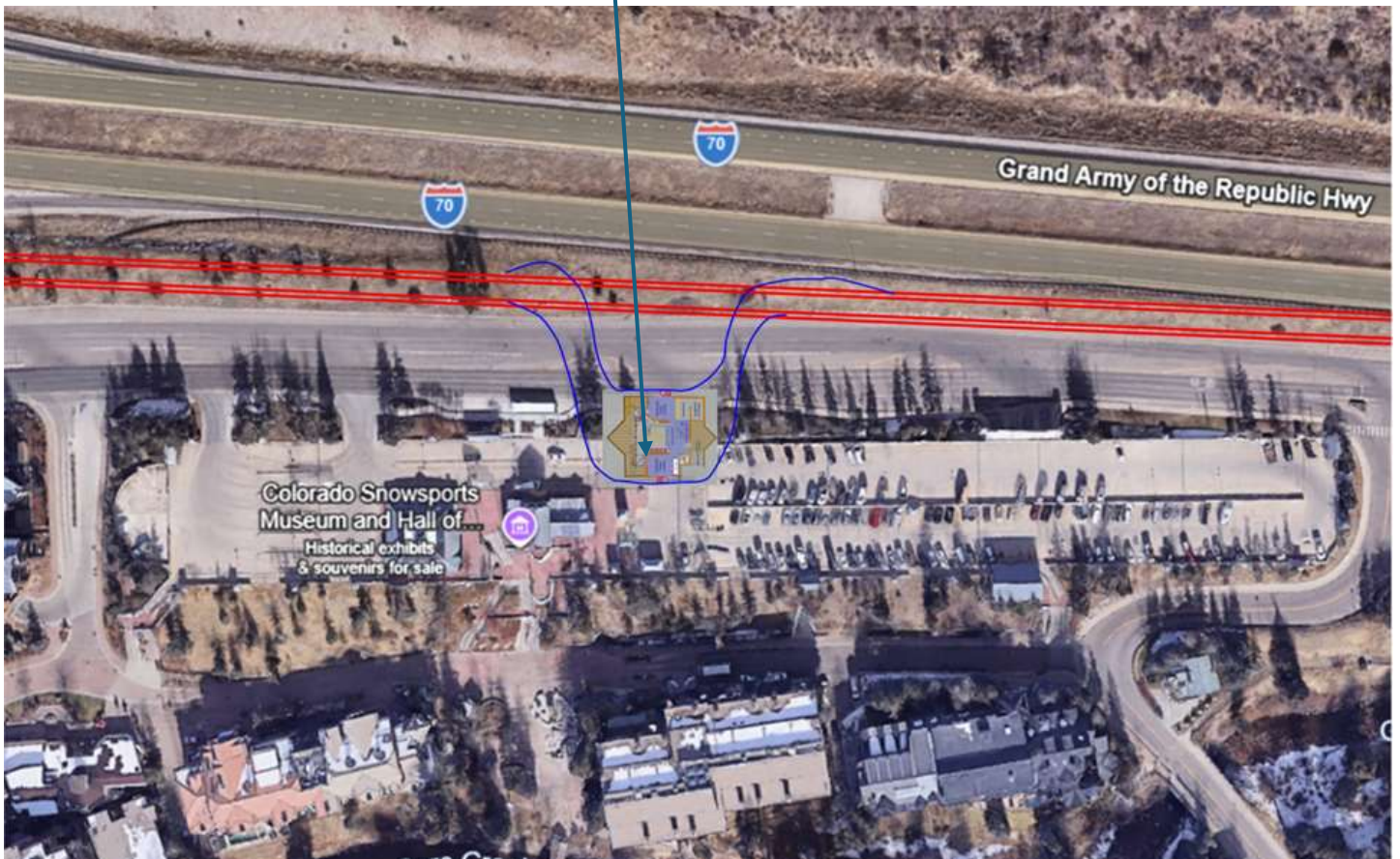
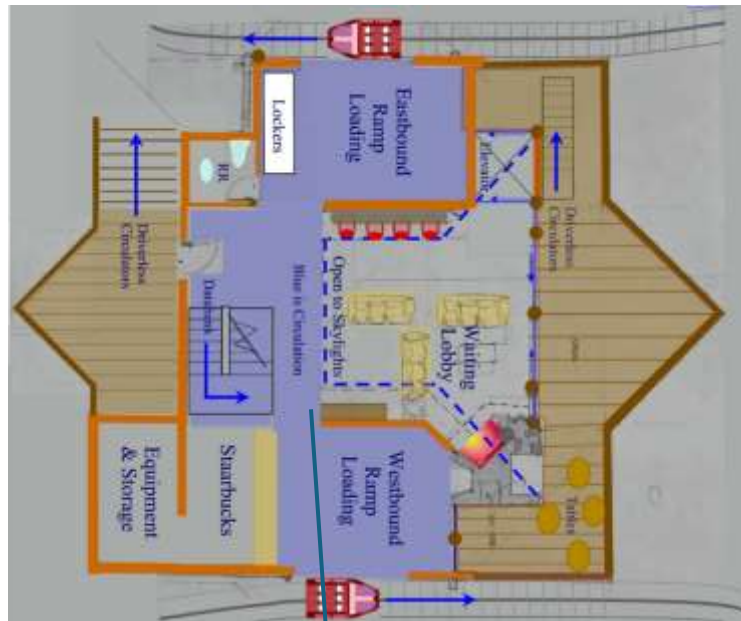
Here are some examples of the Station showing how it can be located



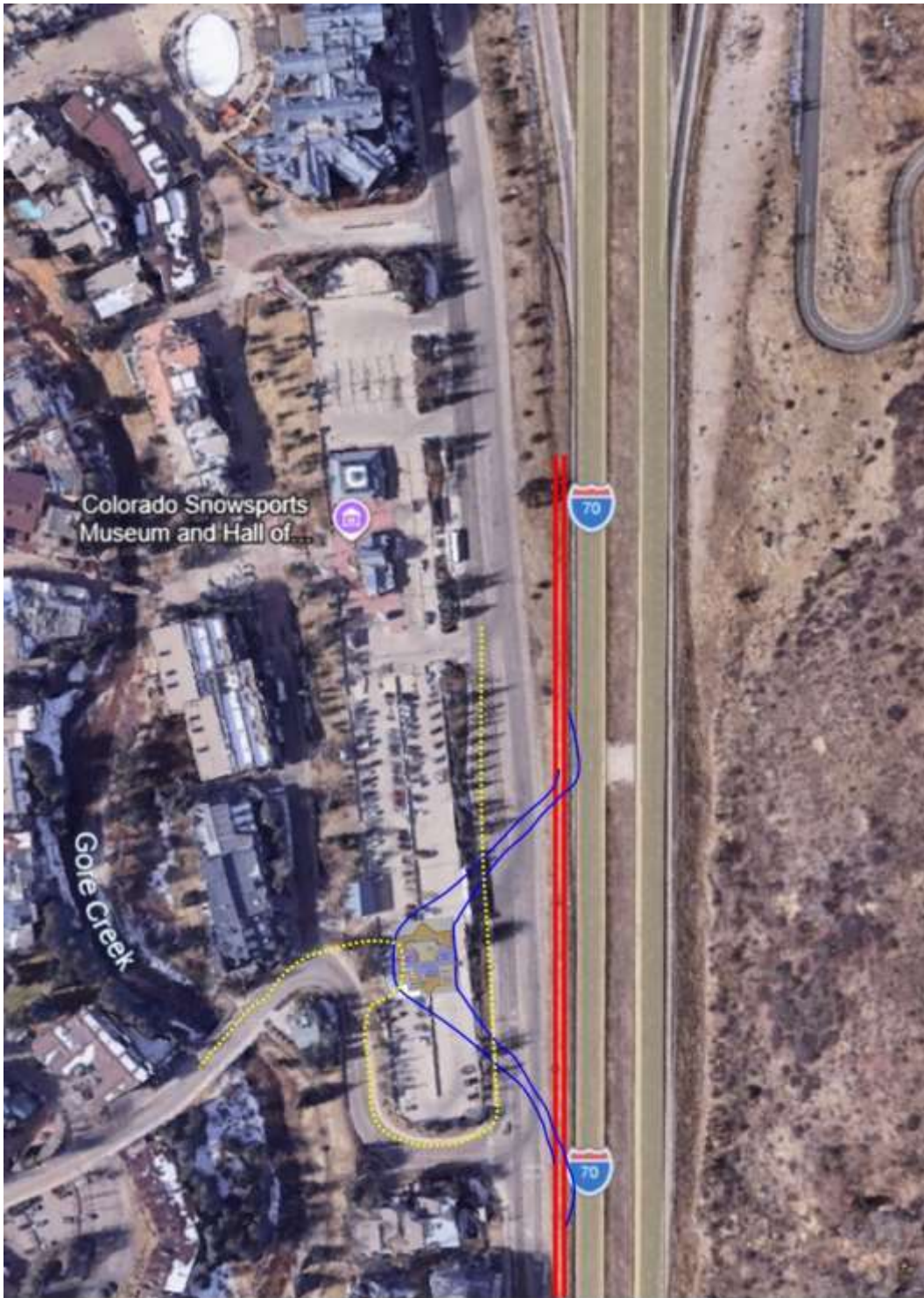
These Log Cabin Stations match the mountain look more than our urban Stations do. The yellow is line illustrates a path a driverless circulator. There are about 15 to 20 stations in the mountains where this may be more appropriate. The size of the station is about 3,000 sf on 3 levels. The larger station allows travelers to wait inside. This image shows the Smart Skyways vehicles traveling across the deck from left to right and stopping for loading at the doors in the middle.

An Illustration of the Mountain Stations in a Log Cabin Look

A Location example keeping the Skyways backbone in the median along I-70

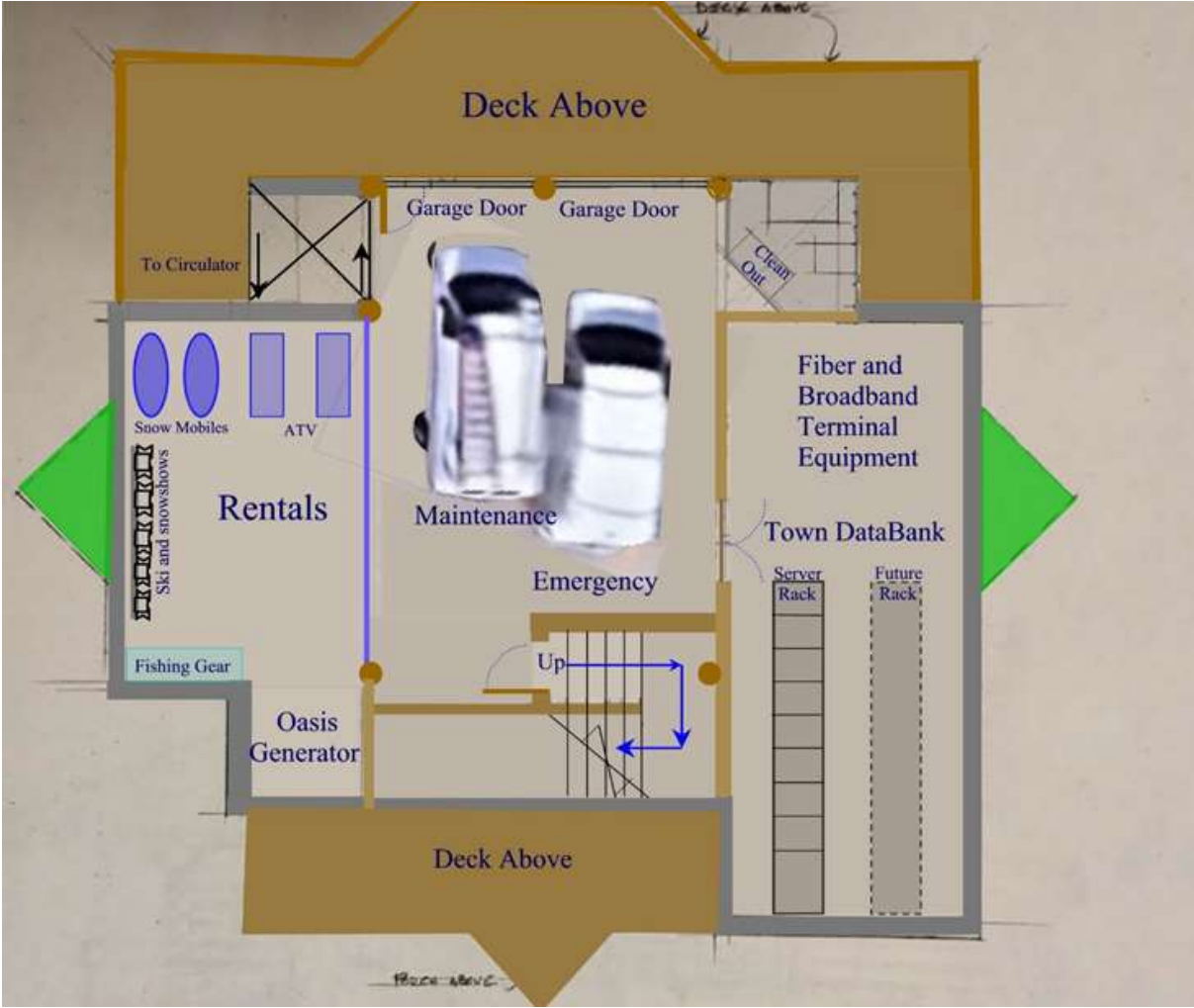


Another Alternative location Not so Crowded

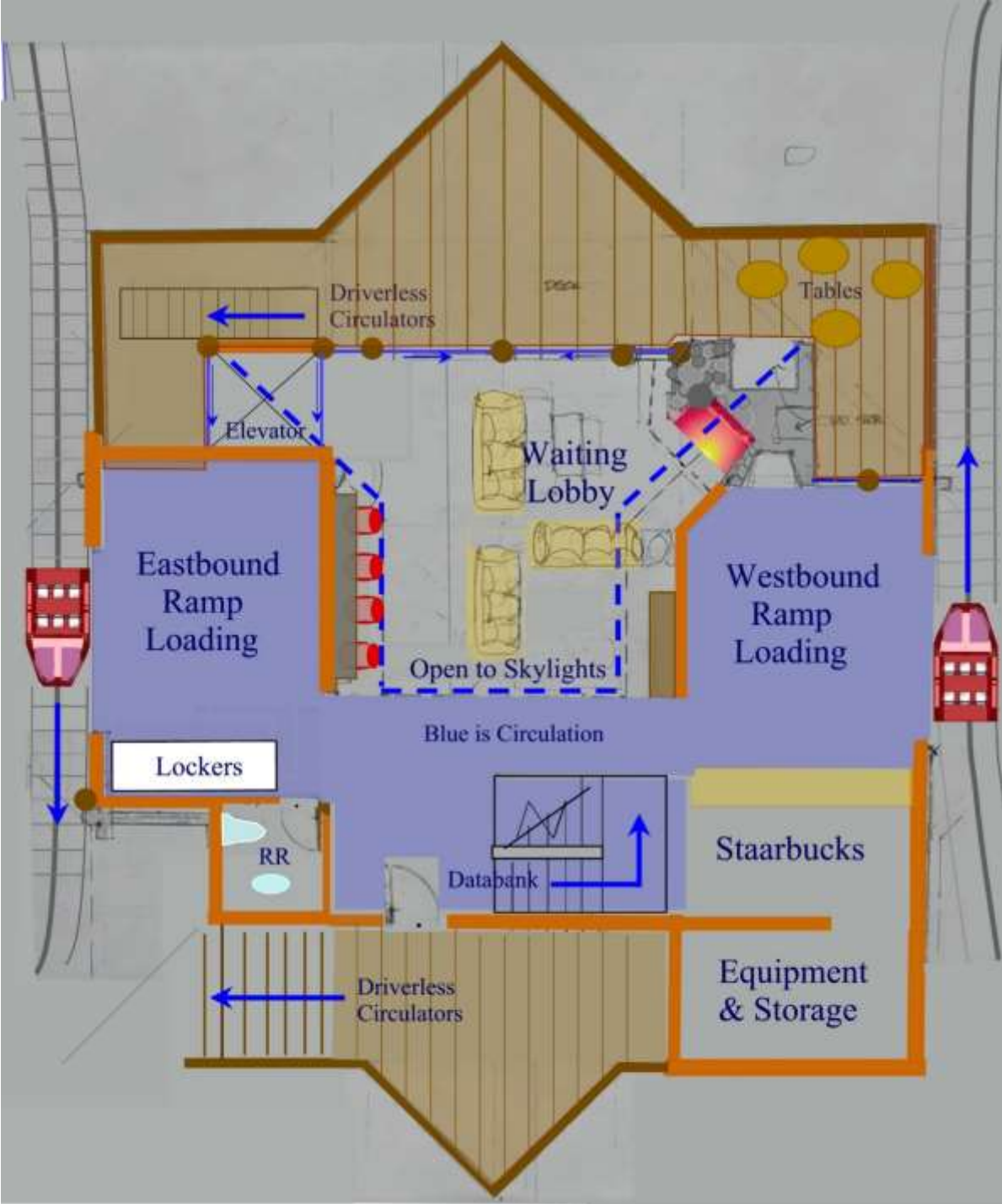


Easier off/on ramps from I-70 with Skyways on the side instead of in the middle of I-70. Yellow line illustrates a driverless circulator from Skyways Station to destination

The Ground Floor has Access to Driverless Circulators that roam the Town on dedicated routes. The loading area is in the Front under the Skyways Station from in the second floor above. Databank, Transmission Terminals, Oasis Electric Generators, Truck Storage, Elevator and Outdoor Rentals

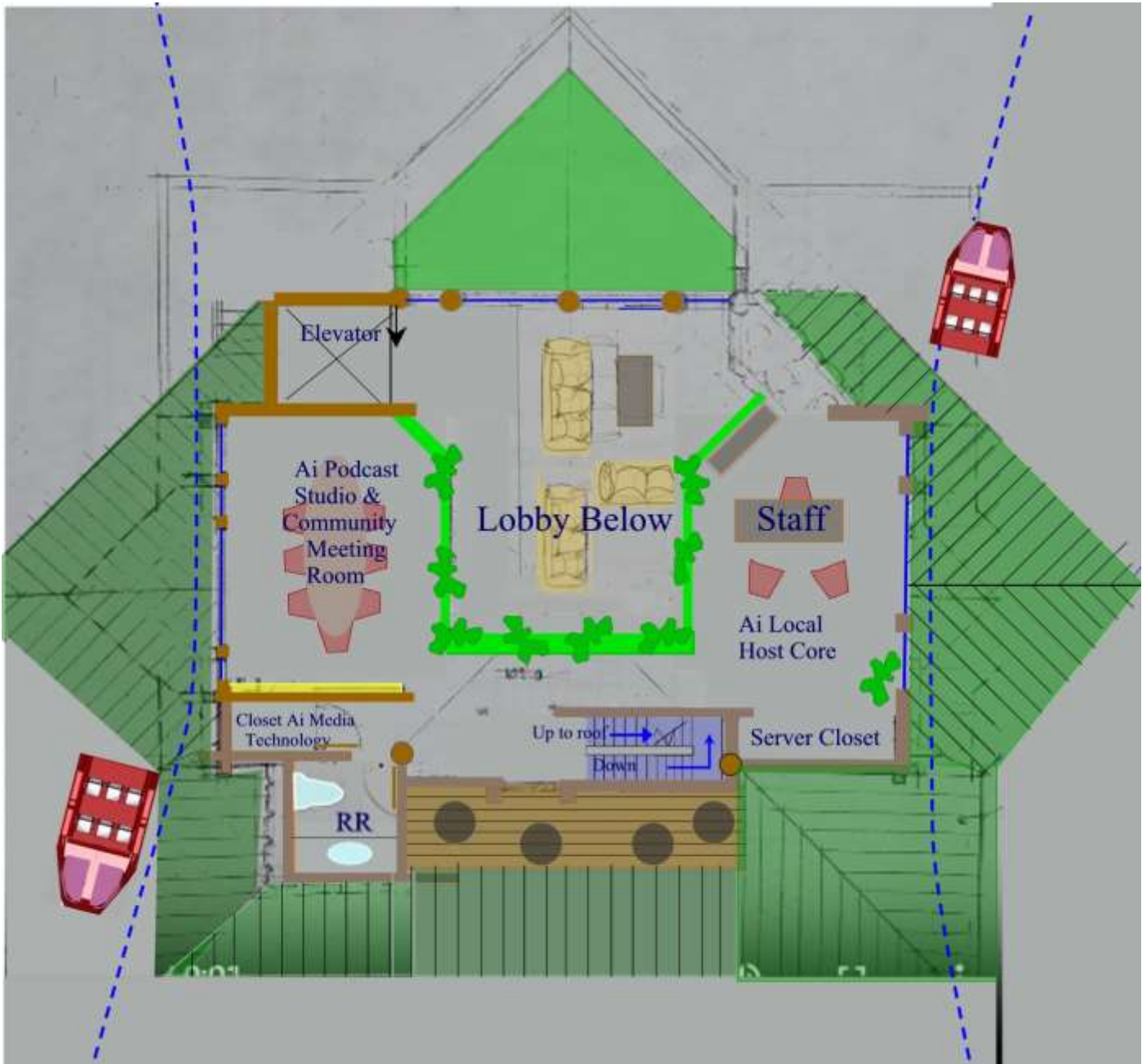


2nd Floor Station Mixing Travelers with a Lobby, Starbucks, Tables, Fireplace (artificial) Elevator, Decks, lockers, Internet plug in counter for devices and Restroom



By providing traveler services, the station is more popular and functional.

### 3rd Floor Smart District Administration Offices and Studio



This level pays the rent. Income from the Smart District will pay the cost of staffing this floor and help build it. The dotted lines above show the route of the Skyways car below. The smart grid is operated from the room at the right where the local AI servers process the data and store it in the Databank on the ground floor. The AI media is operated from the room at the left. The driverless circulators can be paid for from the earnings of these two smart district infrastructures.

